



EMpower Installation manual

Table of contents

Requirements	2
Mac	2
Windows / Linux	3
Hard drive memory space required	4
Start the Installation	5
Start EMpower	6

Hardware requirements for installing and running EMpower are:

	Recommended
CPU	64-bit Intel i7 equivalent or better
RAM	16 GB+
Screen Resolution	1920 x 1080
Installation disk space	200MB
Data disk space	50GB + <i>(depends on the survey)</i>
Internet Connection	Required to authenticate license code
SD Card reader	USB 3.0 <i>(or equivalent speed)</i> for data transfer
Monitor Size	13" +

Windows

Versions supported: Windows 10 and up, 64-bit

Permissions required: Must be logged in as Administrator

Linux

Versions tested: Ubuntu 18.04, 64 bit

Permissions required: Standard user

Mac

OS versions tested: 10.11, "El Capitan" and 10.15.4, "Catalina" 64 bit

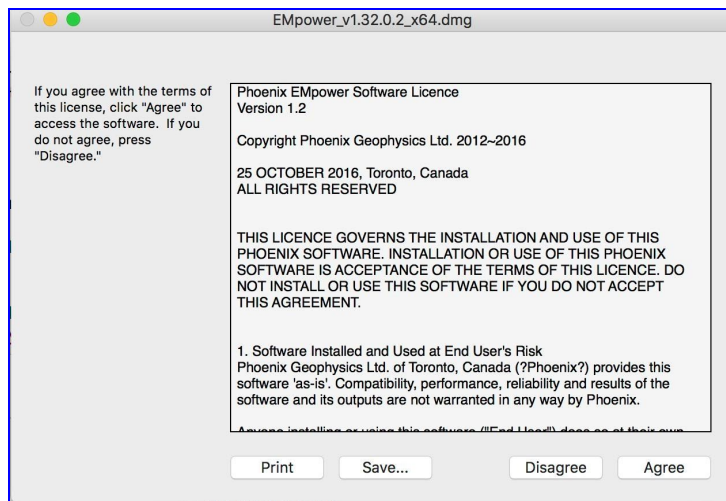
Note: *User needs to change a system setting to allow downloading apps from app store and identified developers*

Mac

1. Drag and drop the installer onto the Applications directory to begin the installation.



2. Read the EMpower License Agreement



- If you agree with the terms of the EMpower license agreement, then click the **Agree** button

Windows / Linux

1. EMpower Setup Wizard by double clicking on the EMpower installation executable file. This file will look similar to the example shown below.

Windows: EMpower_v1.###_x86_amd64.exe

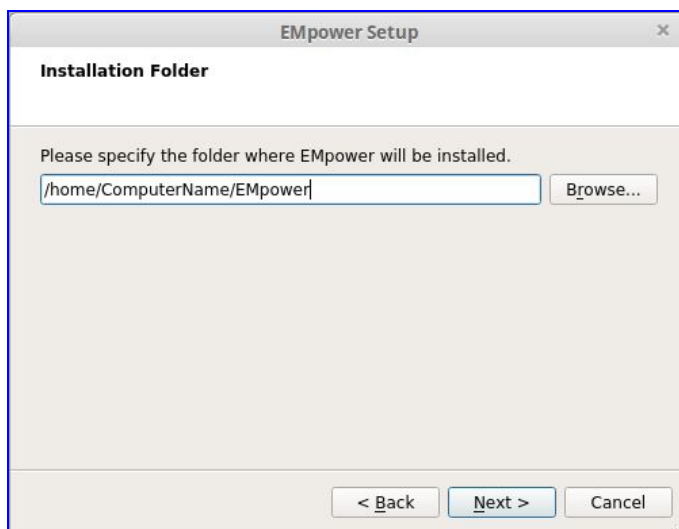
Linux: EMpower_v1.###_x_x64.run



- Click Next

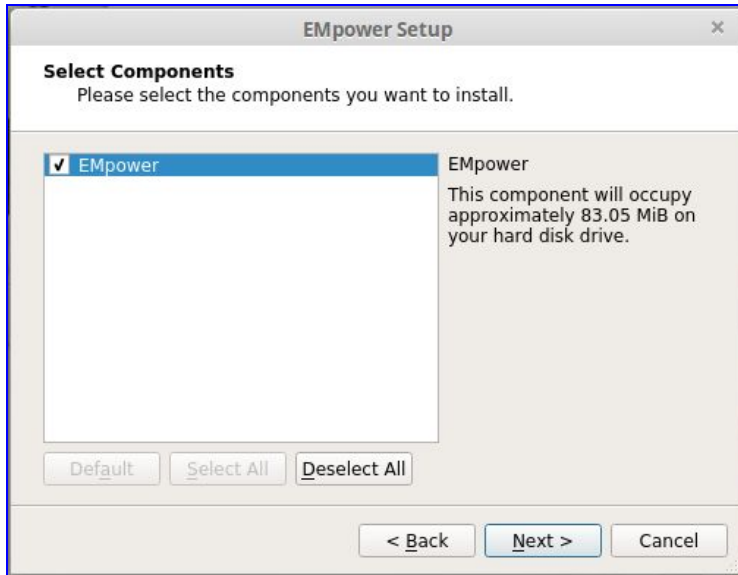
2. Installation Folder

- Use the default directory from the installer, or press Browse to select a different directory
- Click Next



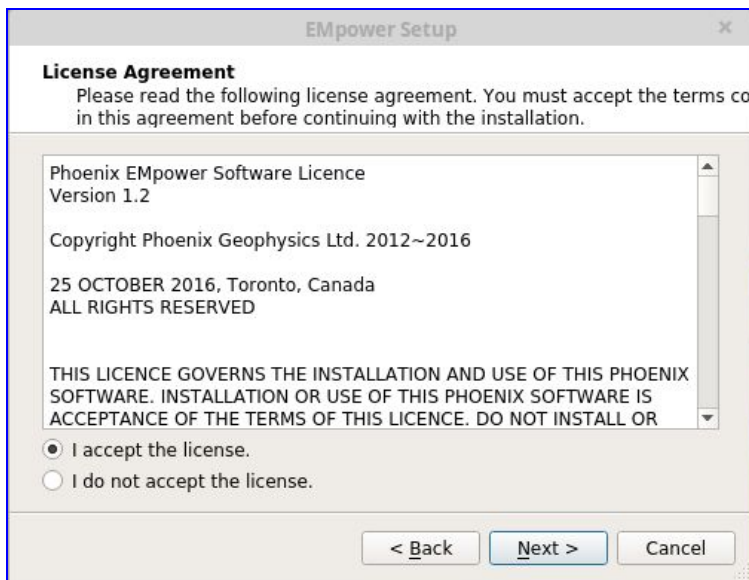
3. Hard drive memory space required

- Review the memory space requirement
- Click Next



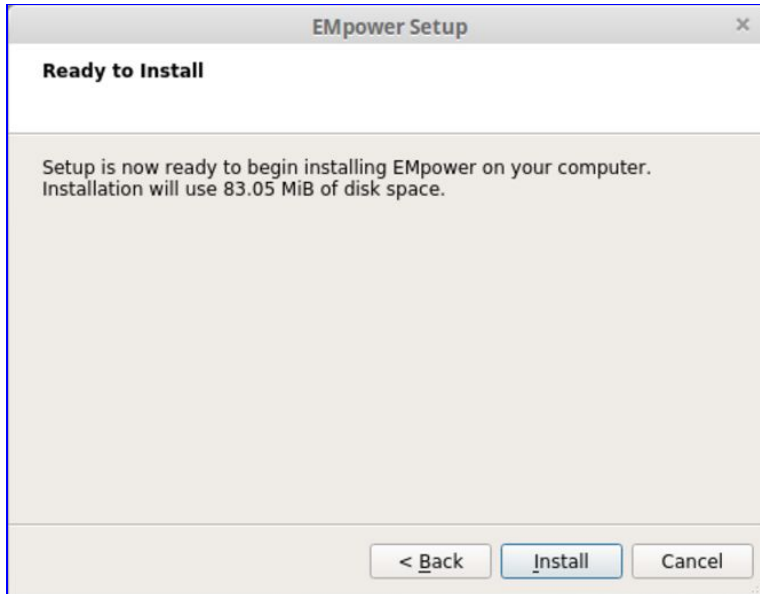
4. Read the EMpower License Agreement.

- If you agree with the terms select “I accept the license“ option
- Click **Next** button



5. Start the Installation

- Click the **Install** button to begin the installation



The windows installer does not have a back button.

6. Click the **Finish** button to complete the EMPower installation

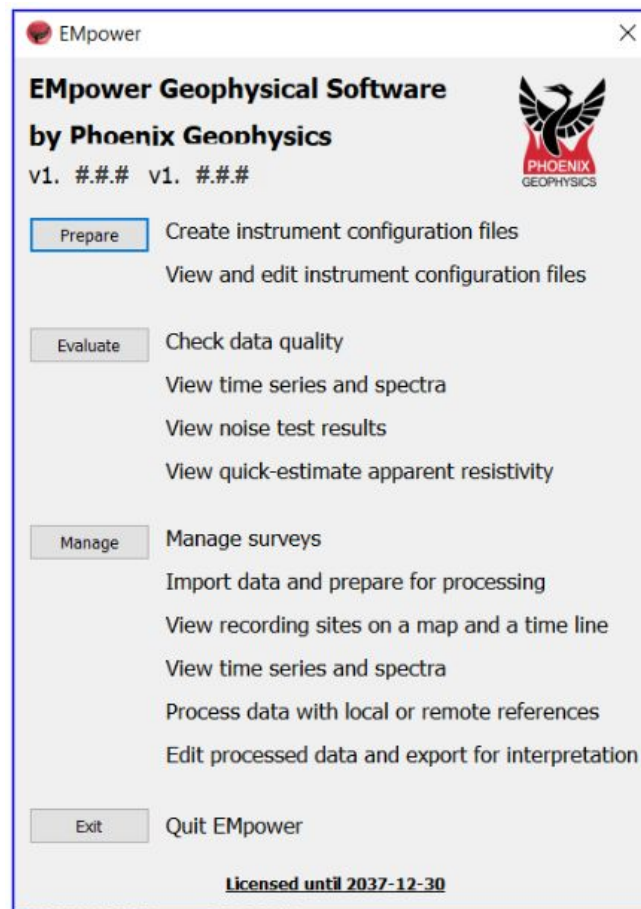


Start **EMpower**

1. Click the **EMpower** shortcut icon (Windows / Mac)



- In Linux, run the empower.sh script in the EMpower installation directory
2. The Text “Unlicensed” will appear at the bottom of the **EMpower** application window
 - The **Prepare** module can be used without license



3. The Evaluate and Manage modules can only be used activating the EMpower license, (see EMpower - License activation document)